

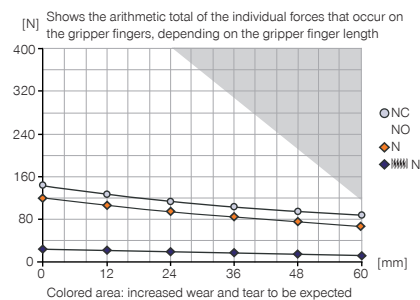
2-JAW PARALLEL ROTARY GRIPPERS

INSTALLATION SIZE DGP404

PRODUCT SPECIFICATIONS

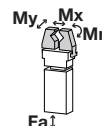


Gripping moment diagram



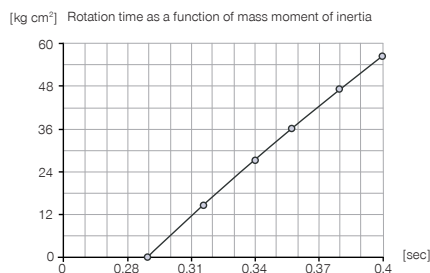
Forces and moments

Displays static forces and moments that can also have an effect, besides the gripping force.



Mr [Nm]	8
Mx [Nm]	15
My [Nm]	10
Fa [N]	300

Rotation time diagram



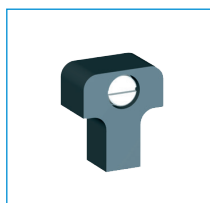
INCLUDED IN DELIVERY



Flow Control Valves - with Swivel joint
DRVM5X4



Centering Disc
DST40400



Stop 90° + 180°
ANS0065

RECOMMENDED ACCESSORIES



Magnetic field sensor Angled Cable 5 m
MFS103KHC



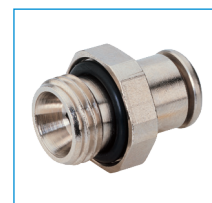
Magnetic field sensor Angled Cable 0,3 m - Connector M8
MFS103SKHC



Magnetic field sensor Straight Cable 5 m
MFS204KHC



Magnetic field sensor Straight Cable 0,3 m - Connector M8
MFS204SKHC



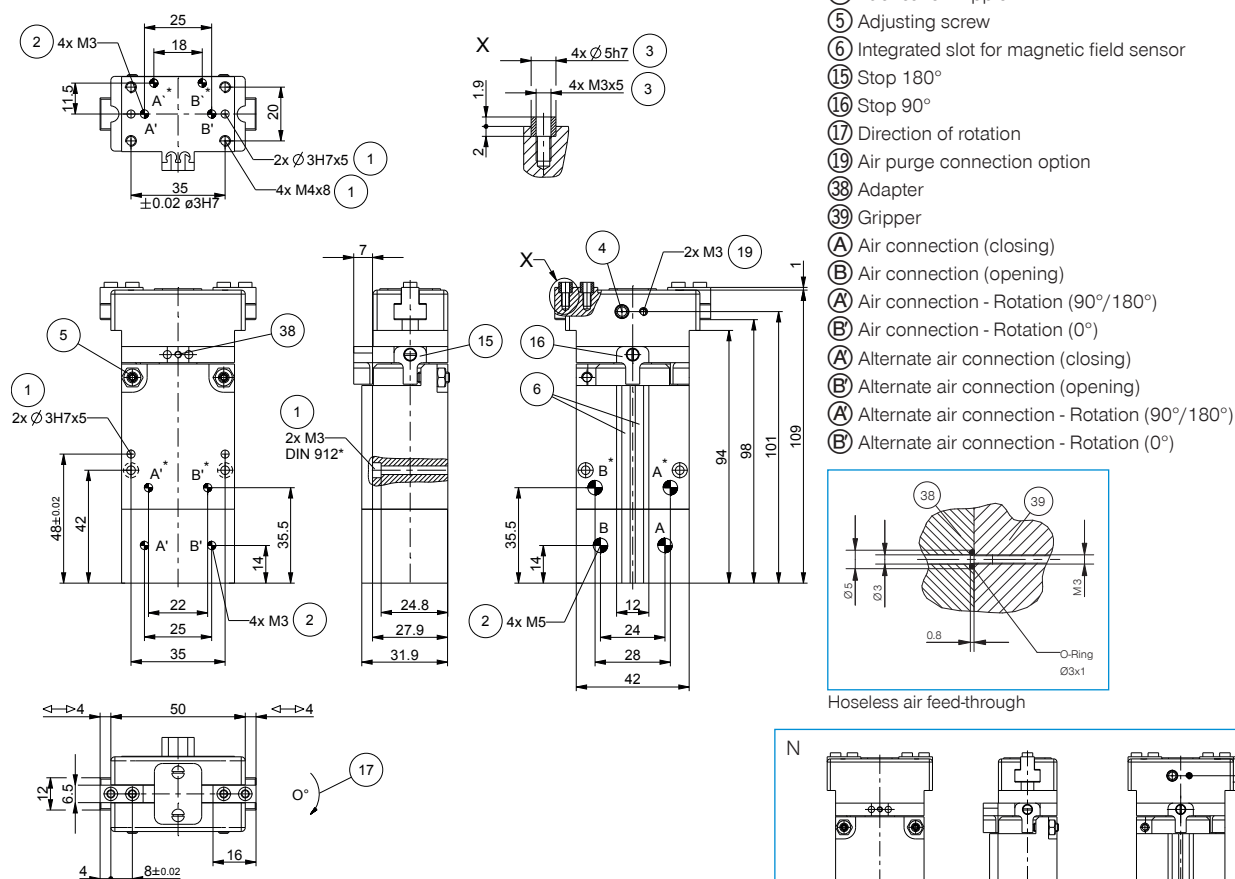
Straight Fittings - Quick Connect Style
GVM5

► Technical Data*

Order no.	DGP404N	DGP404NC	DGP404NO
Stroke per jaw [mm]	4	4	4
Gripping force in opening [N]	115		155
Gripping force in closing [N]	115	155	
Gripping force secured by spring min. [N]		40	40
Closing time / Opening time [s]	0.01 / 0.01	0.015 / 0.015	0.015 / 0.015
Torque [Nm]	0.5	0.5	0.5
Repetition accuracy +/- [mm]	0.05	0.05	0.05
Repetition accuracy +/- [°]	0.05	0.05	0.05
Axial bearing load [N]	960	960	960
Radial bearing load [Nm]	10	10	10
Operating pressure [bar]	3 ... 8	3 ... 8	3 ... 8
Operating temperature [°C]	5 ... +80	5 ... +80	5 ... +80
Air volume per cycle [cm³]	3	5	5
Air volume per cycle 90° [cm³]	4.5	4.5	4.5
Air volume per cycle 180° [cm³]	9	9	9
Weight [kg]	0.44	0.48	0.48

*All data measured at 6 bar

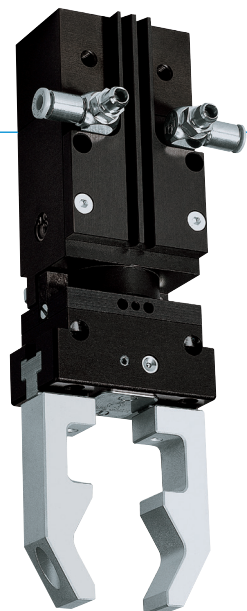
NC / NO



2-JAW PARALLEL ROTARY GRIPPERS

SERIES DGP400

► PRODUCT ADVANTAGES



“TWO in ONE”

► Proven T slot guide

This established and proven guiding technology stands for the highest process reliability like no other

► 2 in 1

Gripping and swivelling in a module allows optimum utilisation of the installation space

► Individually adjustable

How you stay flexible: 90° or 180° swivel angle - You decide what your application requires on site

► THE BEST PRODUCT FOR YOUR APPLICATION



► Our products love the challenge!

Extreme conditions, all over the world—our tried and tested components and systems give you limitless possibilities:

Find the best product for your specific use:

www.zimmer-group.com

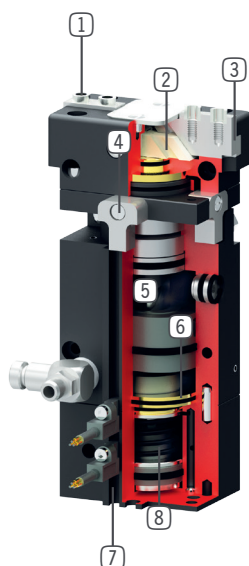
HOW TO ORDER CORRECTLY

- The product order numbers are arranged according to this diagram:

Order no.	DGP404N	<input type="checkbox"/>		
For external gripping, self-locking, spring closing		C		
For internal gripping, self-locking, spring opening		O		



► BENEFITS IN DETAIL



- ① **Removable centering sleeves**
 - quick and economical positioning of the gripper fingers
- ② **Wedge hook mechanism**
 - synchronized the movement of the gripper jaws
- ③ **Precise T-Slot guide**
 - high forces and moments capacity
- ④ **Endposition 0°/90°/180° adjustment**
 - endstops for 0°/90°/180° included with purchase
- ⑤ **Rotating-drive mechanism**
 - robust, wear-resistant
- ⑥ **Drive**
 - two double-acting pneumatic cylinders
- ⑦ **Slot for magnetic field sensor**
 - sensing of the rotational position and gripper jaw position
- ⑧ **Integrated gripping force safety device**
 - optional via integrated spring (C or O models)

► FURTHER INFORMATION IS AVAILABLE ONLINE



► Technical Information

All information just a click away at: www.zimmer-group.com

Find data, illustrations, 3D models and operating instructions for your installation size using the order number for your desired product.

Quick, clear and always up-to-date.

